

Uniform Policy 2019

A dress code is mandated for students. The P & C of Mitchelton State High School resolves that it supports a student dress code for Mitchelton State High School because it believes that a student dress code at Mitchelton State High School promotes objectives of *Education (General Provisions) Bill 2006*.

Rationale

Our Uniform Policy reinforces in students a pride in their own appearance, instils recognition of themselves as an integral part of the school community, and assists in developing pride when representing their school. Issues of equality, health and school safety, and expense are factors that contribute to the establishment of the Uniform Policy at Mitchelton State High School.

Aims

- To promote equality amongst all students
- To further develop a sense of pride in and identification with our school
- To provide durable clothing that is cost effective and practical for our school environment
- To maintain and enhance the positive image of the school in the community

Implementation

- After consultation with the school community, the P & C Association has developed a uniform policy that we believe provides choice for the students, allows for students to safely engage in the many and varied school activities, and caters for the financial constraints of families.
- The dress code outlined in this policy applies during school hours, while travelling to and from school and when students are on school excursions or representing the school at official events.
- Formal and sports uniforms will be prescribed and are required to be worn by all students.
- The Uniform Policy, including details of uniform items and places of purchase, will be published on the website at the start of each year.
- The P & C Association requires the Principal to be responsible for implementation of the Uniform Policy in a manner consistent with the Responsible Behaviour Plan for students.
- Arrangements can be made to supply uniforms via the school administration for families experiencing economic hardship.
- Parents seeking exemptions to the Uniform Policy due to religious beliefs, ethnic or cultural background, student disability, health condition or economic hardship must apply in writing to the School Principal and provide evidence to support their case.

School Uniform

Our Uniform Policy is a reflection of the high standards we embrace here at Mitchelton State High School. The school colours are sky blue, maroon and grey. Navy pants and a spray jacket are also included in our uniform options.

Students make a personal commitment to present themselves well. This will reflect not only personal pride, but also a positive identity of Mitchelton State High School in the community.

Students wear the complete school uniform at all times and are to be clean and well groomed. Students must wear full formal uniform on excursions unless otherwise indicated.

Year 7, 8 and 9 students are permitted to wear their sports uniform on the days they have Physical Education classes or interschool sport. They wear full formal uniform at all times during the other days

Students in Years 10, 11 and 12 must wear the full formal uniform on all days.

PLEASE NOTE:

A note signed by a parent / caregiver is required to explain any deviation from uniform requirements. Students are required to report to the Year Level Co-ordinator in AC03 (8:30 – 9:00am) to obtain a uniform pass for that day. Students without uniform slip are to be identified by CARE teachers and recorded in ID attend. CARE teachers will issue a before school detention.

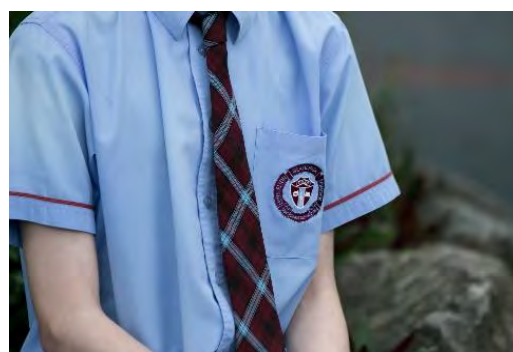
Jewellery

Minimum jewellery is permitted e.g. watch, one pair of small gold or silver stud earrings or sleepers. Jewellery poses Workplace Health and Safety concerns in practical subjects and we cannot allow this risk to be taken.

Body piercing is not accepted in our school and students are expected to remove all forms of piercing with the exception of ear piercing.

Boys Formal Uniform

- Shirt:** Sky blue poly/cotton. School emblem embroidered on pocket.
- Shorts:** College grey may be worn all year.
- Trousers:** College grey may be worn all year. A plain black or dark grey belt is to be worn with trousers.
- Socks:** Mitchelton State High School grey with maroon and blue stripe knee-high socks worn turned down to under the knee with shorts. Plain grey or black socks should be worn with long trousers.
- Shoes:** Plain black leather lace-up shoes as per Footwear section on following page.
- Tie:** The Mitchelton State High School tie is compulsory in Years 10 -12.
- Hat:** Mitchelton State High School, grey felt hat - Compulsory item for all students
- Winter:** Maroon with blue trim zip-up fleece jacket with school emblem embroidered or maroon wool-blend jumper with school emblem embroidered.
- Blazer: (Optional)** Maroon polyester/wool with school emblem on upper chest. It may be worn by all year-level students.



Junior Formal Uniform

Girls Formal Uniform

- Blouse:** Sky blue with school emblem embroidered on the upper chest.
- Skirt:** Maroon/blue/black check. The skirt is designed to be worn at **knee length**.
- Dress Shorts:** Navy dress shorts are an alternative to the formal skirt and designed to be worn with the formal blouse.
- Pants:** College grey pants designed to be worn with the formal blouse are an option available at the uniform shop.
- Socks:** Sky blue anklet socks - stretch cotton/nylon.
- Stockings:** Opaque plain black stockings may be worn with the skirt.
- Shoes:** Plain black leather lace-up shoes as per footwear section on following page.
- Tie:** The Mitchelton State High School tie is compulsory in Years 10 -12.
- Hat:** Mitchelton State High School formal poly-braid hat - compulsory item for all students.
- Jacket:** Maroon with blue trim zip-up fleece jacket with school emblem embroidered or maroon wool-blend jacket with school emblem embroidered.
- Blazer: (Optional)** Maroon polyester/wool with school emblem on upper chest. It may be worn by all year-level students.



Junior Formal Uniform



Senior Formal Uniform



Sports Uniform

(Worn when a student has Sports Excellence Program and Physical Education)

- Shirt:** Maroon/white/blue with school emblem embroidered on upper chest.
- Shorts:** Navy blue shorts with "MITCHIE" printed on the left hand rear leg.
- Shoes:** Sports shoes - white or black with limited colouration.
- Socks:** White ankle socks or white ankle socks printed with "MITCHIE".
- Hat:** Mitchelton State High School bucket hat or sports cap.
- Track Suit (Optional):** Navy blue micro fibre track pants combined with the school two-tone blue microfibre jacket may be worn in cold weather.



Footwear

Plain black leather lace-up shoes (formal) or approved joggers (sports). No other footwear will be permitted. (No logos or coloured stripes are permitted on shoes). Workplace Health and Safety Regulations require the above to be worn at all times in Industrial Technology and Design, Art, Science and Home Economics.



Grooming: Safety and Hygiene

- We promote personal presentation, which demonstrates positive self-esteem and pride in oneself and our school.
- Body art (e.g. tattoos) should be completely covered and not visible. Administration will manage individual cases.
- Students are not permitted to wear make-up or coloured nail polish (clear polish is acceptable).
- Hair is to be of one natural colour (no bright streaks or bright colours accepted) and worn off the face and neatly tied back.
- All hair decorations (ribbons, ties, and scrunchies only) should be sky blue, black or maroon. Hair combs may be of a natural colour to blend with the hair.
- Conservative hairstyles are a requirement for males and females (e.g. Mohawks, rat-tails, undercuts are not acceptable). Extreme styles for either male or female students are not acceptable. Moderation of 'acceptable' hairstyles and colours are at the discretion of the Administration.
- Accessories such as key chains, belt chains are not acceptable.
- Students who wish to wear 'under-shirts' are only permitted to wear white and not hanging out under sleeves or below shirts. There is to be no writing or print on under-shirts.
- Underclothes should not compromise our uniform standards and are not to be visible.
- Facial hair must be neatly trimmed.
- Personal cleanliness is the responsibility of each and every student.
- If students are unable to meet the dress code requirements (due to hardship or extreme conditions) they are required to bring a note from home outlining their reason and the administration will endeavour to make alternative arrangements.
- Failure to follow this procedure will result in consequences being applied according to the school's Responsible Behaviour Plan.
- Variations to the uniform will not be accepted.

Sports/Physical Education

Junior students are able to wear their sports uniform to and from school on their allocated day of sport or on days when they participate in HPE or the Sports Excellence Program. This includes the track suit option during cold weather. On all other days, Junior students wear their full formal uniform.

Senior students (10-12) are required to wear their formal uniform each day and change into their sports uniform for HPE, PE, Certificate III in Sports and Recreation and Horticulture. Any student representing the school at sport must wear full sports uniform unless prior notice is provided.

Sun Safety

In view of the dangers of overexposure to the sun in Queensland, students are required to wear the school hat and SPF 30+ sunscreen on uncovered areas of the skin when in the sun for outdoor activities during the school day. Students are expected to wear the school hat to and from school and during the lunch breaks: "No Hat No Play".

School Bag

The School backpack is a compulsory item for all Year 7, 8 and 9 students in 2019. Students in other year levels are encouraged to use the Mitchelton State High School backpack, available from the uniform shop. The school backpack has been carefully selected to protect student health and safety. The backpack has a one year warranty.



Senior Jersey

Year 12 students select a design of jersey using the school colours, with the school crest embroidered. Students are permitted to wear their jersey, however they must have their formal or sports shirt underneath. They are only permitted to have first or last name printed on the back.

Students are able to have the back of the jersey blank if they prefer.

Operation of the Uniform Shop

The Uniform Shop at Mitchelton High School is operated by the P&C for two reasons:

- As a convenience and service to parents
- To provide funds for the school

The Uniform Shop operates throughout the school Year. Regular opening hours are **Tuesday and Thursday from 8.15am to 11.15am.**

The Uniform Shop will be opened for extended periods to commence the 2019 school year. These times are outlined below.

The Uniform Shop stocks all uniform requirements for the school dress uniform and sports uniform (excluding shoes).

Uniform Shop Trading Times January 2019

The regular opening times for the Uniform Shop are 8.15am to 11.15am on Tuesday and Thursday during school term.

Extended Hours of Operation January 2019

Wednesday 23rd	Open 8.15am to 6.00pm
Thursday 24th	Open 8.15am to 6.00pm
Friday 25th	Open 8.15am to 6.00pm
Tuesday 29th	Open 8.15am to 3.00pm (Note: this is the first day of school)
Wednesday 30th	Open 8.15am to 10.15am, 2.30pm to 6.30pm
Thursday 31st	Open 8.15am to 10.15am, 1.30pm to 6.30pm
Friday 1st	Open 8.15am to 11.15am